

Chigasaki's Traditional Festival "Hamaorisai" is coming up!

A beautiful beach festival, Chigasaki-style!

On Marine Day (July 18) about 40 mikoshi (portable shrines) will take a dip in the ocean at Chigasaki's Nishihama beach for the Hamaorisai festival.

Around 2:00am the mikoshi begin their journey to the beach from their home shrines in Samukawa and Chigasaki. People of all ages carry the mikoshi calling "Dokkoi, dokkoi" in a rhythmic manner to encourage each other to keep going as they toil carrying the heavy mikoshi. All mikoshi arrive at the beach by 7:00am. At that time, a ceremony is held to wish for a plentiful harvest.



The most stunning part of the festival is when the mikoshi are carried into the sea to be purified. Watching the waves wash over the mikoshi under the morning sky is a sight to behold. Last year onlookers gasped as a huge wave engulfed one of the mikoshi. Fortunately, everyone (including the precious mikoshi) emerged safely. This historical festival is one of the four biggest events in Chigasaki inspiring many citizens to rise early and gather at the beach. Set your alarm clock and join the festivities at Hamaorisai!

(PHOTOGRAPHER: Kohtarō Iwamoto)



Are you ready for some summer fun?

Spectacular fireworks adorn the night sky of Chigasaki Southern Beach on August 6th.

Fireworks displays are one of the charms of Japanese summer. Chigasaki's will take place at Southern Beach on August 6th from 7:30 to 8:20pm. (In case of rain, it will be postponed until the 7th.) About 3000 spectacular fireworks will brighten the night sky. Bring a picnic blanket and your food and drink of choice and enjoy the amazing show from the comfort of the beach.

It takes about 20 minutes on foot or 10 minutes by bus from the south exit of the station to the beach. There is no parking so please refrain from going there by car. Also, please note that there will be traffic restrictions on Southern Street between Southern Beach and Nakakaigan 2 chome from 8:00 to 9:30pm.

In order to keep the beach clean, please take your trash home with you.

Many people are expected to come to this event so please arrive early to reserve your patch of sand.

Chigasaki fireworks are made possible only through donations. Your donation today will help make this great event even better. Donation boxes can be found at restaurants, convenience stores, and various other locations.

For more locations please check the Chigasaki City Tourism Association website at [<http://www.chigasaki-kankou.org/event/festival04/bokin/map.html>].

(PHOTOGRAPHER: Kohtarō Iwamoto)

Hydrangeas along the Koide River are in full bloom!

Admire the beauty of the purple bouquet.



Hydrangeas are blooming on the Koide River banks, 250m upstream from Hagisono Bridge

Over 450 of the hydrangeas along the Koide-river in Chigasaki are at their best this season. They begin to bud at the beginning of June and are in full bloom by mid-June and well into early July.

Why don't you take a scenic walk in an idyllic setting along the river? You are all but guaranteed a peaceful time listening to the larks with a beautiful distant view of the Tanzawa mountains and Mt. Fuji.

Greeting Message from Soichi Noguchi



Dear friends and family in Chigasaki,

Greetings from Houston, Texas! My name is Soichi Noguchi, and I am a Japanese astronaut.

I grew up in Chigasaki, studied aerospace engineering in Tokyo, and was lucky enough to be selected to become an astronaut in 1996. I have been to space twice, spending 177 days in zero gravity. From space, I have seen the magnificent Mt. Fuji and the beautiful Shonan beach many times. I truly appreciate the heart-warming support from Chigasaki city during my space missions. I wish all of you would cherish Chigasaki's wonderful nature and help protect our earth's precious environment.

Soichi Noguchi,
Astronaut

Like to Bike, but not up for the Tour de Chigasaki? Take advantage of FREE bicycle parking lots near bus stops!

Commuting by bicycle is great exercise and a wonderful way to enjoy the gorgeous seasons in Japan, but for some people the commute is too far from their homes. Chigasaki city and Kanagawa Chuo Kotsu Co., Ltd. have come up with an excellent solution for this problem: free bicycle parking lots near bus stops! Ride your bicycle from home to certain bus stops around Chigasaki and then commute the rest of the way to your destination by bus.

Bicycle parking lots can be found near the bus stops at Konakajima, Nakajima, Shonan-mizuki, Shinden-iriguchi, Tsurumine-shogakko-mae, Tsutsumi-sakashita, Hamamidaira-danchi, Furukawa and Matsukazedai.



Events & Activities in Chigasaki

Hear it. See it. Experience it! There are a lot of wonderful events and activities around Chigasaki. Mark your calendar and have fun with your loved ones! Event details may change at any time, so please check with the event holder for updates.

JUNE

11 SAT

HYDRANGEA FESTIVAL

Koide River banks, 250m upstream from Hagisono Bridge
In case of rain, it will be postponed until the 12th.

21 TUE

MORNING FISH MARKET "Sakana no Ichi"

Chigasaki Fishing Port
The event might be changed due to bad weather.
Inquiries: Chigasaki Fishermen's Association [Tel: 0467-82-3025]

JULY

2 SAT

BEACH OPENING CEREMONY

10am-1pm at Southern Beach Chigasaki
Beach houses open for business until Aug. 31.

18 MON

HAMAORI FESTIVAL

For details, please see article on page 1.

30 SAT

SOUTHERN BEACH FESTA

4pm-8pm at Southern Beach Chigasaki
[http://2016.southernbeachfesta.com/]

AUGUST

6 SAT

FIREWORKS DISPLAY

7:30pm-8:20pm at Southern Beach Chigasaki
In case of rain, it will be postponed until the 7th.



Chigasaki for Kids

Best Kept Secret

Shimin-no-mori

Get outside with your kids! Located in the north of Chigasaki, Shimin no Mori is a great destination for active kids.

There is a treehouse, balance beams, vines to swing on, large spaces to run and much more. The air is fresh under the canopy of trees. Take a picnic and spend the day exploring the forest.

To get there, take a bus (湘 11, 茅 03 or 茅 50) from the north exit of Chigasaki station and get off at Tsutsumi-sakashita bus stop.

Entrance is free.

VOICES OF CHIGASAKI



What do you like about living here?

Chuck (US)

Well I'd have to say the best thing about living here is the friendliness that I encounter, especially from complete strangers. I've made quite a few friends/acquaintances with people over the years without any type of formal introduction. I've had people welcome me into their homes and treat me like family --long before I could really communicate in Japanese. For those kinds of experiences, I am forever grateful.

I love traditional festivals held in Chigasaki. I've participated in the Ohoka-Sai Festival Parade in beautiful traditional costume, and it was a precious experience for me.



Thao (Vietnam)



Vesna (Serbia)

What do I like about living here? The high probability of getting your lost items back! Lost things propped up on fences and trees always make me smile.

In nearly 25 years in Japan I have never felt unsafe. People have integrity here. I've always got back anything I've left behind, including my wallet. Recently, outside a busy station I watched as a young woman ran 50 meters out of her way to return to an older man something he'd just dropped. I also love the weather! The sun shines a LOT!

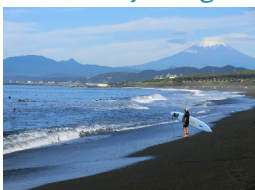


Paul (Wales)



The Three Best Views of Mt Fuji from Chigasaki

Everyone loves a glimpse of majestic Mt. Fuji and now Chigasaki has three newly designated views of this breathtaking mountain!



Headland Beach



Yanagiyato in Satoyama Park



Toriido bridge/Ishihara bridge in Nango

The forests, trees, and other things that symbolize the city around town and that make up the landscape that represents Chigasaki are designated "Chigasaki landscape resources" and preserved. (PHOTO: Machikeimachikan Forum Chigasaki)

The Saturday Seaside Morning Market

Buy local! Eat local!

Every Saturday from 8:00-9:00am there is a Morning Market at Chigasaki Park Stadium. It is a treat to be able to buy fresh, organic, seasonal produce directly from the source. At the market, you can buy a wide variety of vegetables including carrots, cabbages, potatoes, cauliflower, burdock, yams and lettuce. Flowers cultivated by Chigasaki farmers are also available. It is important as well to support local businesses whenever possible.

Things sell out quickly so it is best to come as early as you can.

Beach Cleanup & Yoga Sessions for everyone

Bring friends and family for yoga and help keep Chigasaki beach beautiful.

Masako Uehara offers yoga sessions in exchange for cleaning up trash on Headland Beach every Saturday evening from May to September. Please bring a trash bag for cleanup and a yoga mat to practice on!

Event details may change at any time so please check [https://ja-jp.facebook.com/umiyoga] weekly for updates.

Let's read Kanji(漢字)!

禁止(きんし)KINSHI

The kanji 禁[kin] means "prohibited" or "banned" and you'll see it everywhere coupled with the kanji 止[shi] which means "stop". Please be aware when you see 禁止[kinshi] because it means you are being warned that you are not allowed to do something.

yuei-kinshi
遊泳禁止 [ゆうえいきんし]
No Swimming

tachiiri-kinshi
立入禁止 [たちいりきんし]
No Trespassing

chusha-kinshi
駐車禁止 [ちゆうしゃきんし]
No Parking

inshoku-kinshi
飲食禁止 [いんしょくきんし]
No eating/drinking

Meet the Everyday Hero in Chigasaki

Li Xia, winner of the first prize in IAC's 19th Japanese Speech Contest.



Congratulations to Li Xia, the winner of first prize in IAC's 19th Japanese Speech Contest!!!

For her prize-winning speech, Ms. Li shared memories of her childhood in Liujia village, a suburb of Dalian, China. As a child she was immersed in nature; raising chickens, growing vegetables and collecting insects. She also recalled fond memories of playing in the river and catching fish.

Much like the rivers of her childhood, Ms. Li has submersed herself in Japanese culture for the past 4 years. Of her most recent home, Chigasaki, she says, "I love Southern Beach, the wealth of nature and the access to good child care."

How did she become a first rate Japanese speaker? Language school, watching the news and checking her son's homework! "The most difficult point in studying Japanese is expressing my feelings exactly," she says frankly.

Good luck to Ms. Li with her future endeavors in Japan! We'll look forward to seeing you around town!

(PHOTOGRAPHER: Aya Watada)

The 29th Nandemo Yoichi

The 29th Nandemo Yoichi will be held at Chigasaki Central Park from 4 p.m. to 8 p.m. on August 7. This event offers citizens a chance to get together for some summer fun.

There will be two areas in the park: the flea market area and the eating and drinking area. In the first area, you can enjoy shopping for secondhand clothes, books, accessories and many other treasures. In the second area, you can sample many kinds of delicious foods and beverages. There will be 20 volunteers available that day to answer any questions you might have. Look for the people wearing the "Nandemo Yoichi" volunteer t-shirt. We hope you'll join us!

RYU AMBE



UP AND COMING CHARACTER ARTIST

At 26, Ryu Ambe is a young and extremely talented character designer/artist based in Chigasaki city.

Each of his characters is a take on his cartoon-like world full of humour with clean minimal lines and simple but vibrant colors. His illustrations were recently published in Kazunori Matsumoto's "Akarankun". He spoke with Chigasaki Breeze about his passion and work.

CB: What makes you tick?

R.A.: Encounters with others. It's all about the people who impact us and the people we impact.



CB: Have your parents always supported your passions?

R.A.: Yes. I have wonderful parents and have always felt lucky to be blessed with such a supportive family.

CB: How did you find the original inspirations and style for your character design?

R.A.: I am still exploring my style but my greatest inspiration comes from Hanna-Barbera cartoons I used to watch as a child, all day and night.

CB: Tell us a bit about your creative process, the stories behind your illustrations and your characters' names?

R.A.: Well, the process itself is quite unconscious. What I mean is, when I draw, I am unconsciously inspired by various memories/references such as encounters and conversations with people I've met, the movies I've seen, different things, and I express myself through my pictures.

CB: You had an exhibition at the Stone Malone gallery in California recently. How did that go?

R.A.: It was a great experience! Many people said they liked my art and that has given me a huge confidence boost. I couldn't sell much but I did manage to sell one rough sketch.

CB: Where can we see your art?

R.A.: My website is currently under construction but you can see my art on Instagram.

That's all folks!

A big thank you to Ryu Ambe

To check out his work, head over to Instagram@ryuambe



How to call an Ambulance

•Dial 119 for an Ambulance

We need an ambulance. = Kyukyū desu.
(きゅうきゅうです)

1. Give your address, name and telephone number.

I live at [X-Y-Z, Chigasaki, Chigasaki City].

= [Chigasaki-shi, Chigasaki, X no Y no Z] desu.
(ちがさきし、ちがさき、XのYのZです)

My name is XX. = Watashi no namae wa XX desu.
(わたしのなまえは XXです)

My telephone number is XX-XXXX. = Denwa wa XX no XXXX desu. (でんわは XXのXXXXです)

2. Give the location (and the names of any nearby well known landmarks).

It is near XX Elementary School. = XX Shogakko no soba desu. (XXしょうがっこうのそばです)

Please check [http://www.city.chigasaki.kanagawa.jp/_res/projects/default_project/_page/_001/006/196/eigo.pdf] for some more emergency expressions.

•Emergency Hospitals in Chigasaki and neighborhood

Chigasaki Municipal Hospital

5-15-1 Honson Tel: 0467-52-1111

Shonan Tobu Comprehensive Hospital

500 Nishikubo Tel: 0467-83-9111

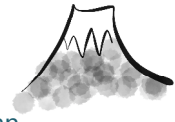
Chigasaki Tokushukai Hospital

14-1 Saiwaicho Tel: 0467-58-1311

Shonan Fujisawa Tokushukai Hospital

1-5-1 Tsujido Kandai, Fujisawa Tel: 0466-35-1177

Ask Fuji-san



Dear Fuji-san,

I have a question about gift-giving etiquette in Japan. When I was visiting Japan I gave my hostess a gift as I arrived at her home. She was gracious and thanked me, but she didn't open it and quickly put the gift aside. Did I offend her somehow? Is it impolite to give people gifts in their own homes?

Thanks for your help!

Sincerely,

Susan (France)



If you have any questions about Japan or Japanese customs or etiquette, ASK FUJI-SAN at info.chigasaki@breeze@gmail.com

Dear Susan,

Don't worry! You didn't do anything wrong. In fact, I remember being similarly surprised when I visited the United States. I gave my host mother a gift which she immediately opened. She even tore the paper as she opened the gift! I was shocked because usually in Japan we open gifts in private unless we are with close family members.

I hope this helps you understand your hostess' reaction a little better.

Happy travels!

Fuji

Donation for Kumamoto



**JAPANESE
RED CROSS SOCIETY**

The Japanese Red Cross Society welcomes your cash contributions to support its humanitarian assistance for the people impacted by the earthquakes which hit Kumamoto, Japan on 14th and 16th April 2016.

Period: from April 15 to June 30, 2016
Donation Box (Chigasaki area):
City hall, Koide Branch, Tsujido Office,
Hamamina Office, Kagawa Office,
libraries, and community centers
[\[http://www.city.chigasaki.kanagawa.jp.e.ox.hp.transer.com/fukushi_seikatu/1017722.html\]](http://www.city.chigasaki.kanagawa.jp.e.ox.hp.transer.com/fukushi_seikatu/1017722.html)

Get Information about Kanagawa in your Language!

Email services in 6 languages.

Info Kanagawa offers a free email service in English, Chinese, Spanish, Portuguese and Tagalog. Information includes: sightseeing spots in Kanagawa, upcoming events and information for your daily life about education, welfare and health issues. There is also a service with information about what to do in case of an earthquake and earthquake preparedness. It is issued 4 times a month by the Kanagawa International Foundation. There is also an easy Japanese version written in simple words for Japanese learners.

Why don't you visit
[\[www.kifjp.org/infokanagawa\]](http://www.kifjp.org/infokanagawa)
and sign up for this useful
service?



Special thanks to **Gary Bayliss** for designing our beautiful logo! You can check out Gary Bayliss' art at garybayliss.com

EDITORIAL TEAM (In alphabetical order):

Lisa Cameron, Setsuko Isa, Takeo Ishii, Tetsuya Karasawa, Yasuo Kurita, Masumi Miwada, Kumi Miyake, Shuhei Miyake, Seiji Nakane, Chihiro Watanabe.

Back issues are available on the IAC website [www.7jp.com/iac] or the Chigasaki City website.

Inquiries: info.chigasaki@breeze@gmail.com

Editor's note

Welcome to the NEW Chigasaki Breeze. Our first issue was published in October 2005 as the city bulletin for English speaking residents. Since then, it has delivered useful information to help you in your daily life. Our new team is excited about focusing on covering local events and giving fascinating insights into life in our hometown, Chigasaki. We hope the new Chigasaki Breeze will help enrich your life.



Shuhei Miyake
Shuhei Miyake
Editor in Chief